



MIFLOR

We speak carpet tile!



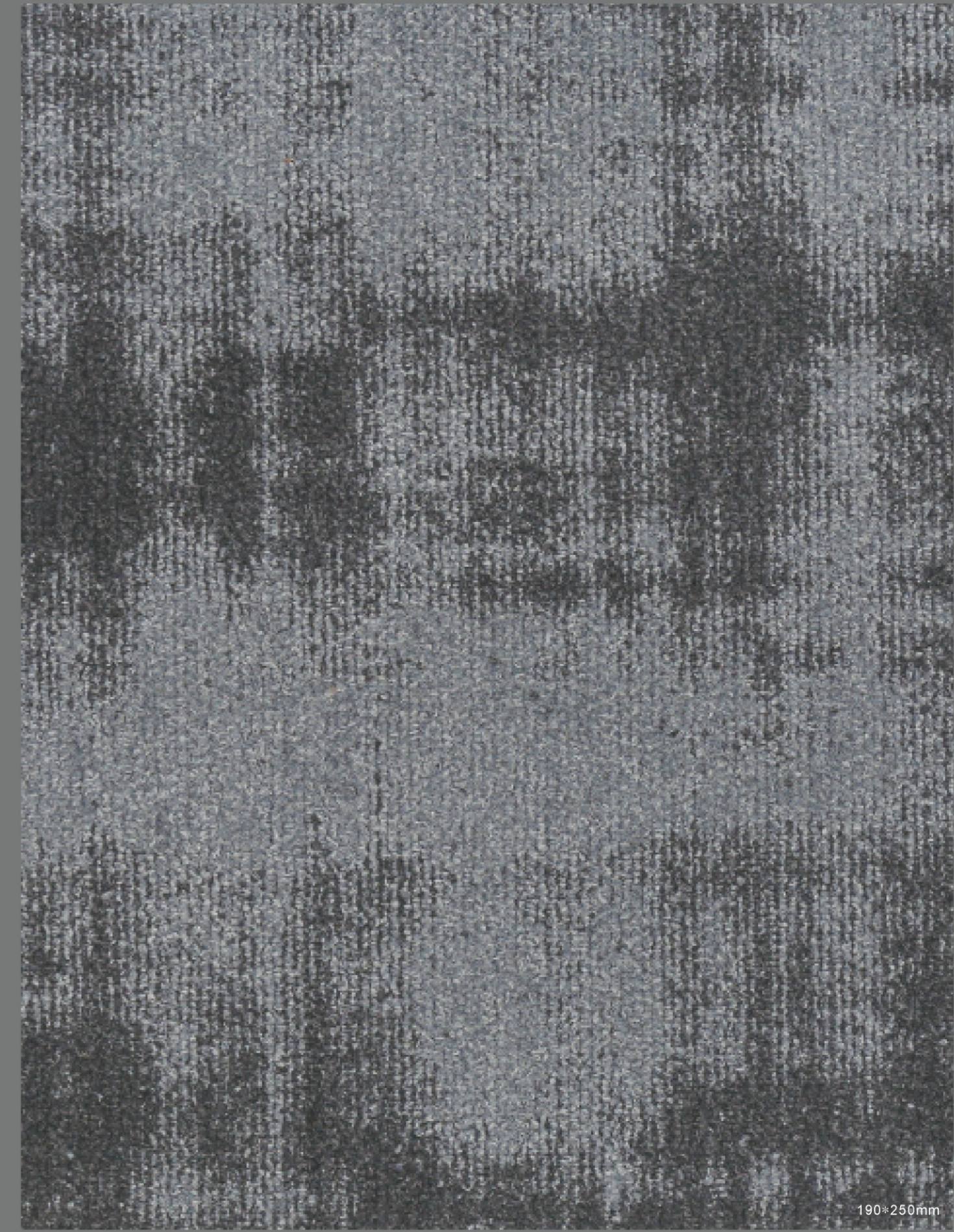
LUMINESCENT

Style Name:	Luminescent
Construction:	Tip Shear
Yarn:	100% Universal Nylon 66
Color System:	100% Solution Dyed
Gauge:	1/12
Stitches:	10 per inch
Pile Weight:	24 oz/yd <sup>2</sup>
Pile Height:	2.5mm-6.5mm(±0.5mm)
Backing:	PVC with fiberglass
Tile Size:	50cm×50cm
Area of Use:	Heavy Commercial
Flammability:	Passes (ASTME648-10) Class 1 Passes (GB 8624-2012) B1
Static Control:	Life-of-the carpet Static Protection



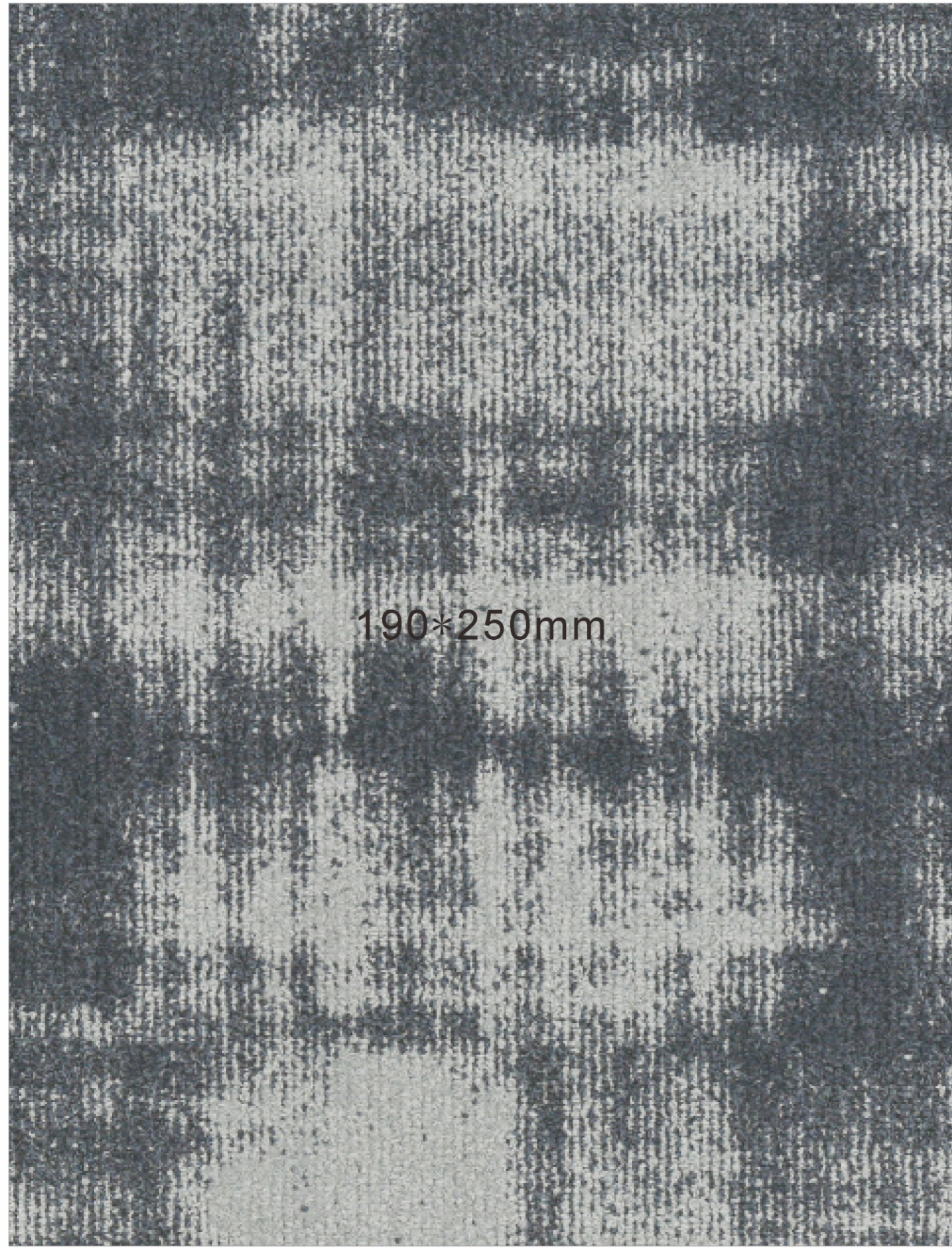
MIFLOR

MIFLOR



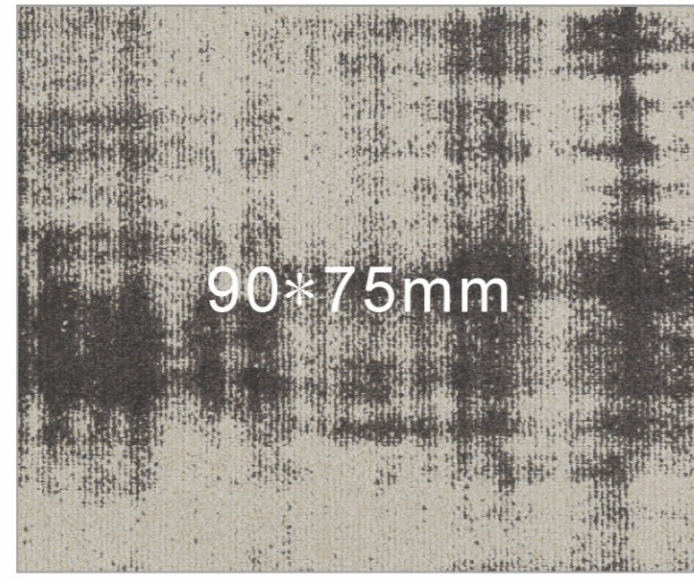
Luminescent 8

190\*250mm



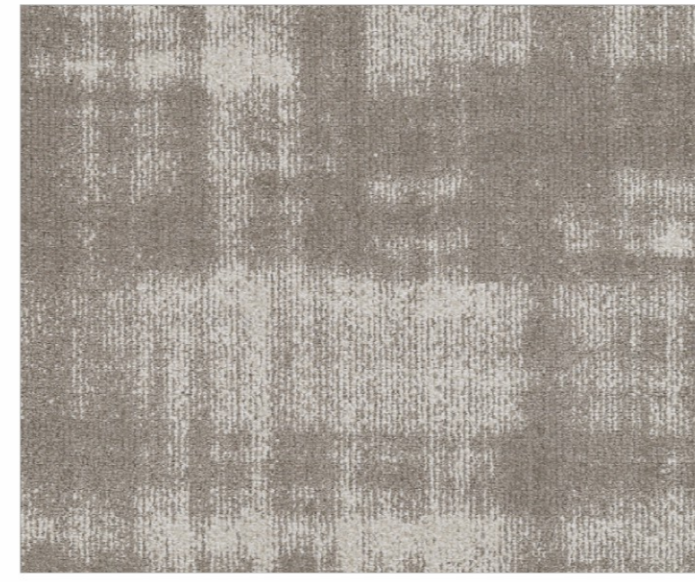
190\*250mm

Luminescent 1



90\*75mm

Luminescent 2



Luminescent 3



Luminescent 4



Luminescent 5



Isolation  
acoustique



Isolation  
thermique



Chaises  
roulettes



Anti-  
statique



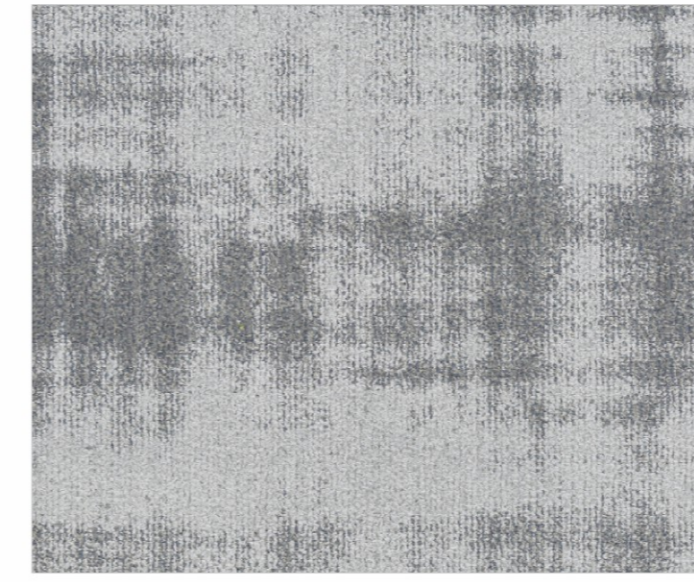
Wear  
warranty



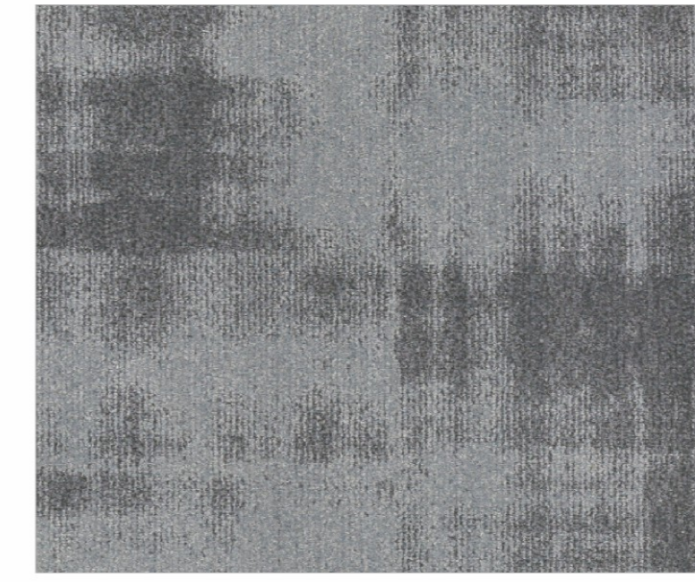
Anti-  
flammabilité



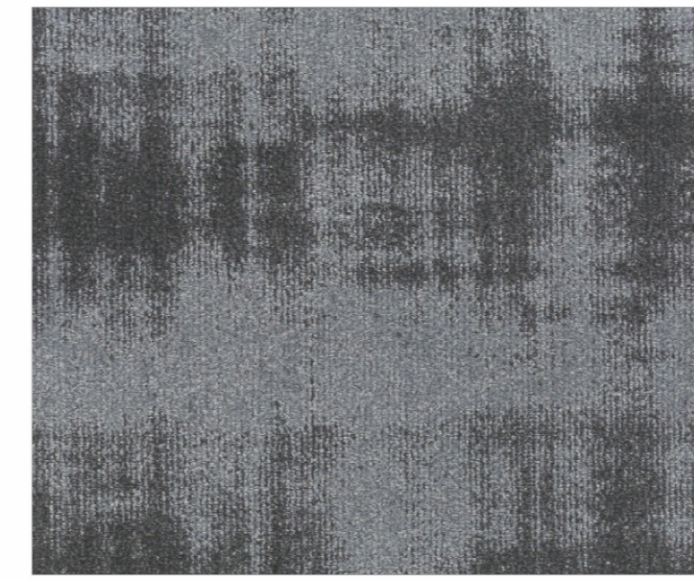
Splash  
Resistant



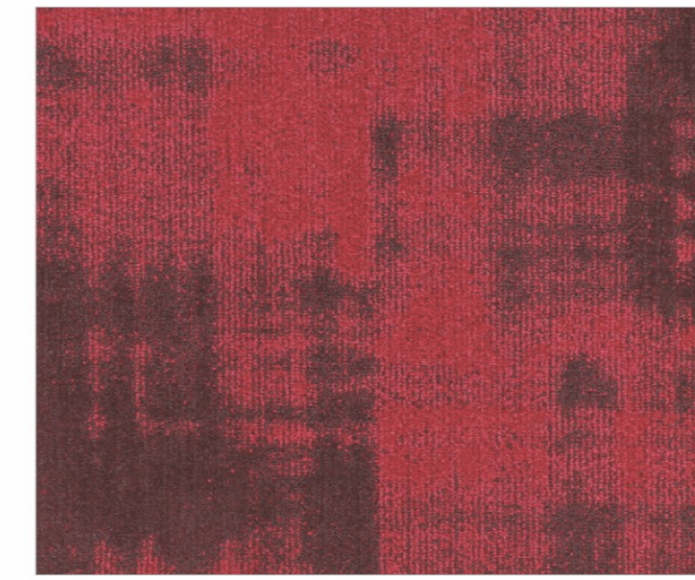
Luminescent 6



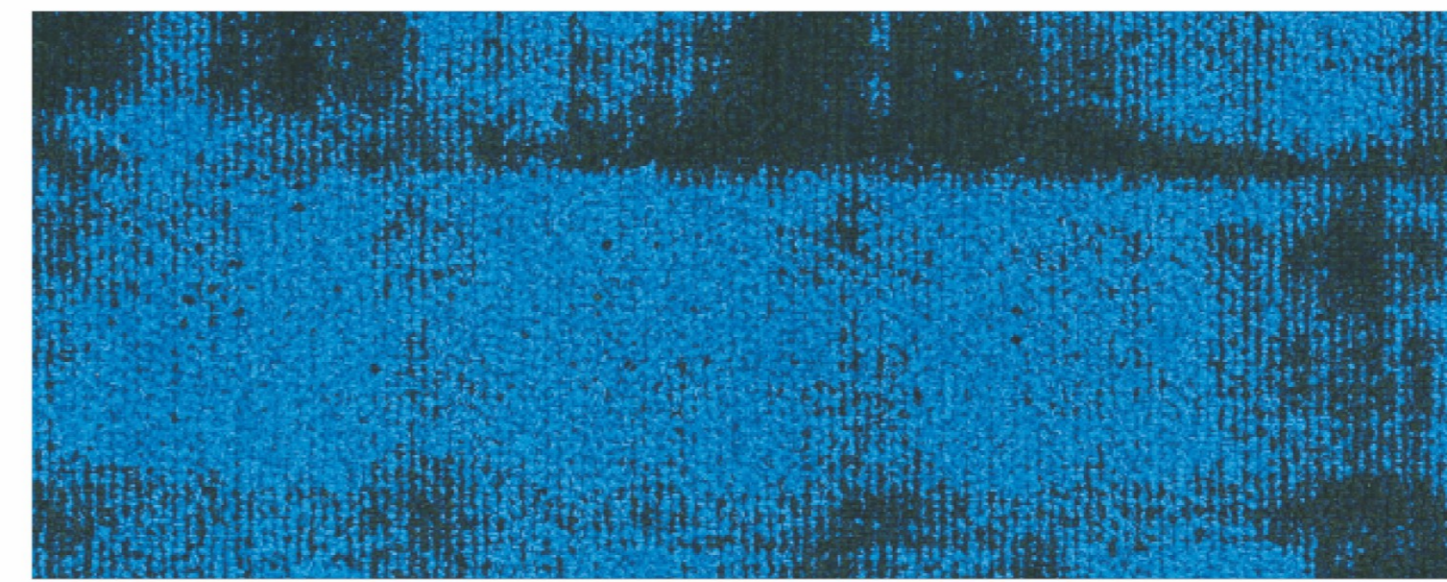
Luminescent 7



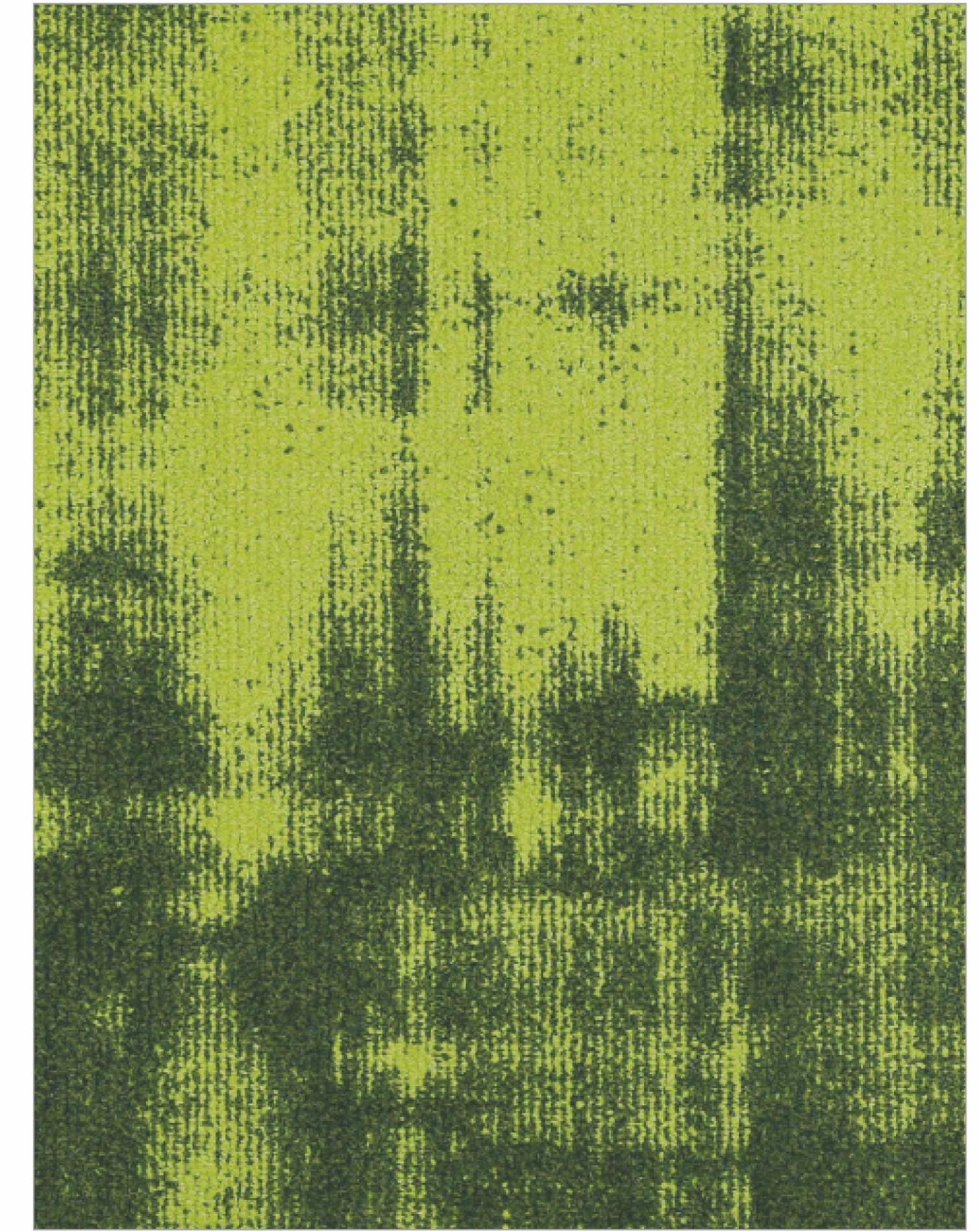
Luminescent 8



Luminescent 9



Luminescent 10



Luminescent 11



We speak carpet tile!

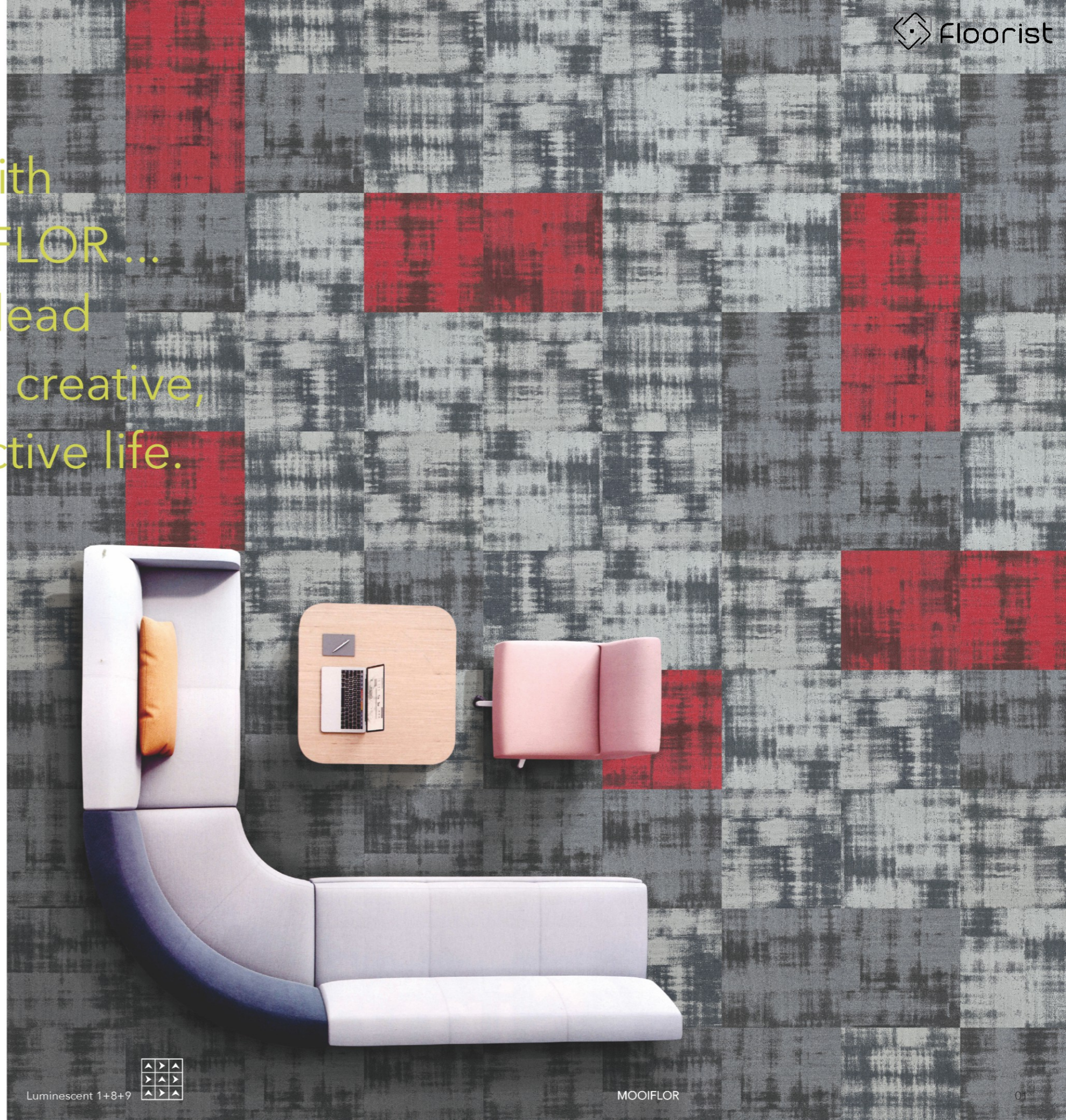


MIFLOR

We speak carpet tile!



Start with  
MOOIFLOR ...  
... and lead  
a more creative,  
productive life.





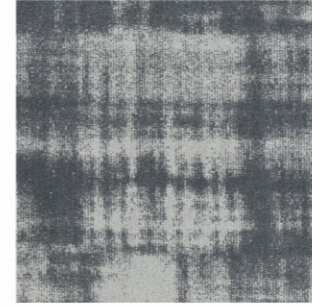


Innovation  
turns nothing  
into somethings.

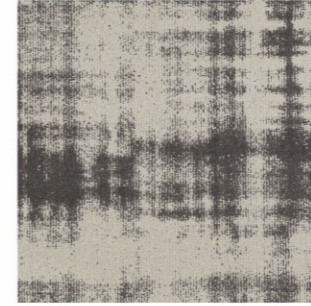




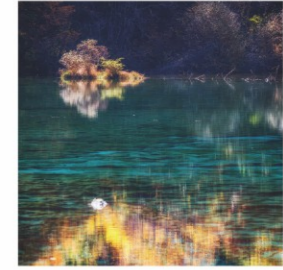
LUMINESCENT SERIES



Luminescent 1



Luminescent 2



TEXTURE



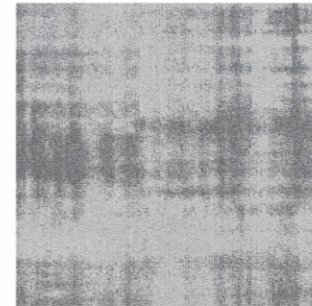
Luminescent 3



Luminescent 4



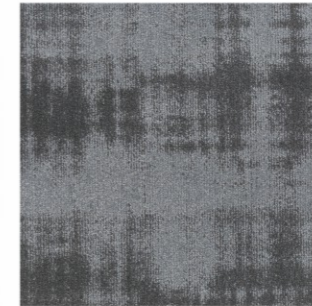
Luminescent 5



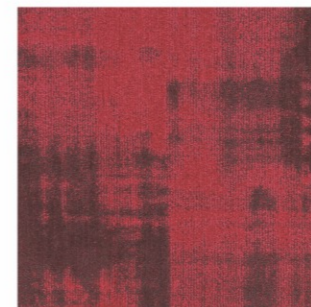
Luminescent 6



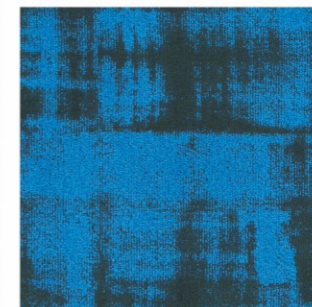
Luminescent 7



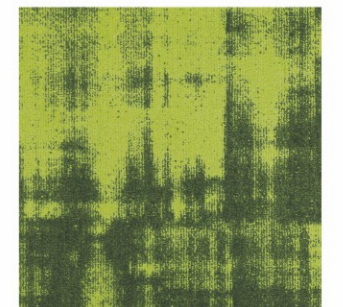
Luminescent 8



Luminescent 9



Luminescent 10



Luminescent 11

INSTALLATION METHODS



Quarter Turn



Ashlar



Monolithic



Brick



Luminescent 4+5

