



We speak carpet tile!



We speak carpet tile!



Ineffable 4 



Nebulous 4 



Nebulous 2+3







Nebulous 1+Ineffable 1 



 Ineffable 6



Ineffable 8 



Ineffable-7+Nebulous-6 



 Ineffable 3



Nebulous 1



Nebulous 2**



Nebulous 3

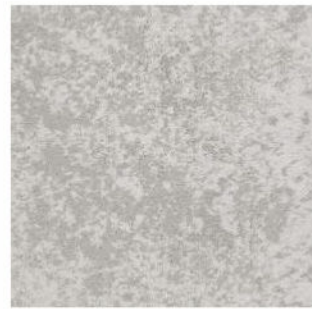
NEBULOUS
SERIES



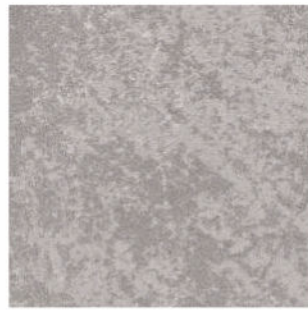
Nebulous 4



Nebulous 5



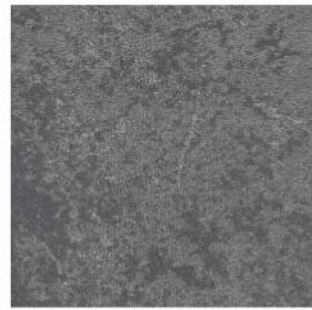
Nebulous 6



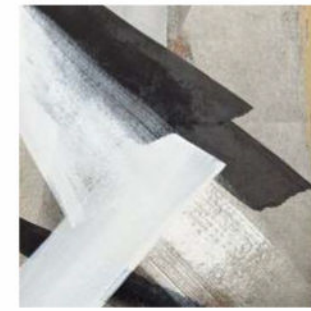
Nebulous 7**



Nebulous 8



Nebulous 9



Ineffable 1



Ineffable 2



Ineffable 3

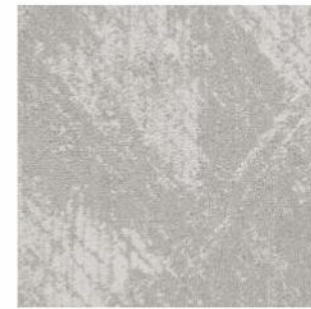
INEFFABLE
SERIES



Ineffable 4



Ineffable 5



Ineffable 6



Ineffable 7



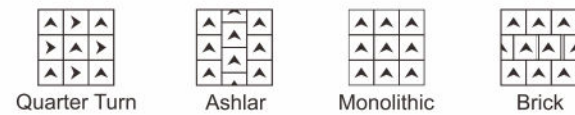
Ineffable 8



Ineffable 9

(** - In Stock)

INSTALLATION METHODS



Style Name: Nebulous / Ineffable
 Construction: Multi-level loop
 Yarn: Universal Nylon 6.6 & Nylon6
 Color System: 100% Solution Dyed
 Gauge: 1/10
 Stitches: 8 per inch
 Pile Weight: 22 oz/yd²
 Pile Height: 4.0mm-8.5mm (±0.5mm)
 Backing: PVC with fiberglass
 Tile Size: 60cm×60cm
 Area of Use: Heavy Commercial
 Flammability: Passes (ASTME648-10) Class I
 Passes (GB 8624-2012) B1
 Smoke Density: Passes ASTM E 662 Less than 450
 Static Propensity: Passes AATCC-134 ≤3.5kV
 Static Control: Life-of-the carpet Static Protection
 Formaldehyde Purification: Passes (JC/T 1074-2008) Class I

