



We speak carpet tile!



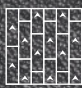
M  IFLOR

We speak carpet tile!

Start with
MOOIFLOR ...
... and lead
a more creative,
productive life.





Polaris 2+3+4 



Polaris 2+11

Creativity
is more than
just being
different.
Making the
simple,
awesomely
simple,
that's
creativity.

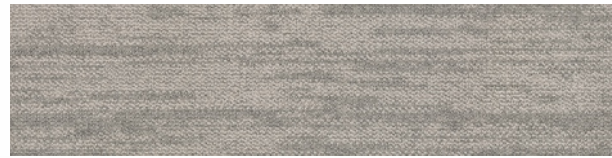


WE
BELIEVE
IN LOW IMPACT AND
HIGH
PERFORMANCE





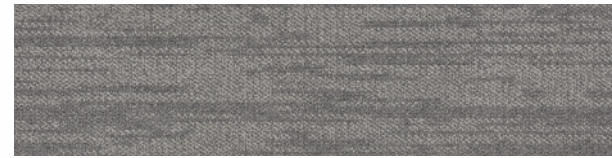
POLARIS SERIES



Polaris 1



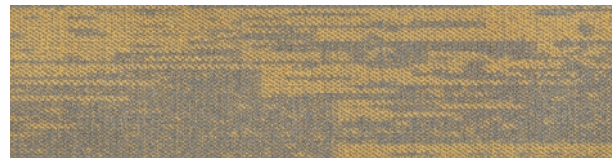
Polaris 2



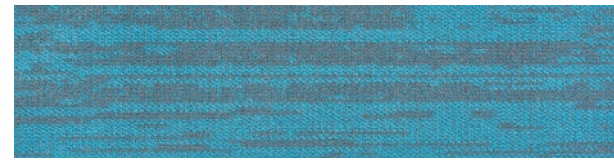
Polaris 3



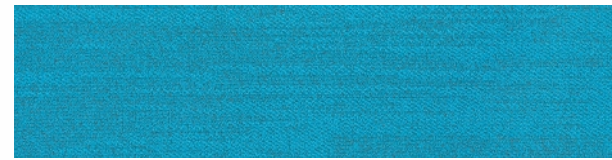
Polaris 4



Polaris 5



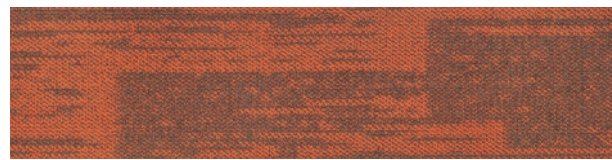
Polaris 11



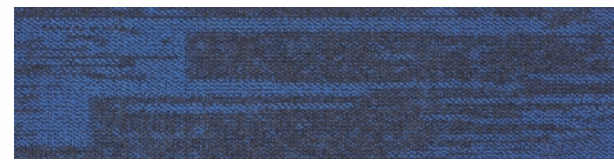
Polaris 14



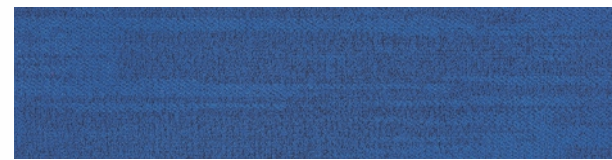
Polaris 20



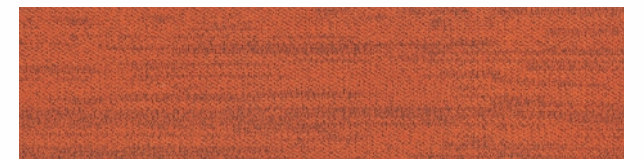
Polaris 6



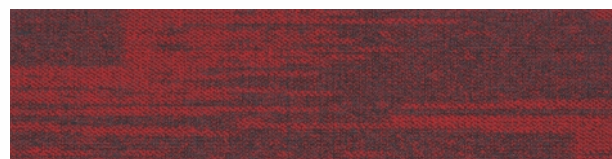
Polaris 12



Polaris 15



Polaris 21



Polaris 7



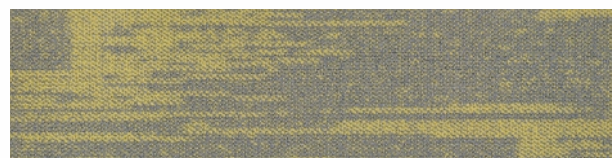
Polaris 13



Polaris 16

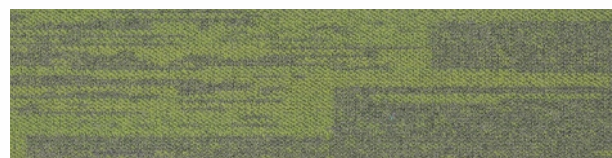


Polaris 22

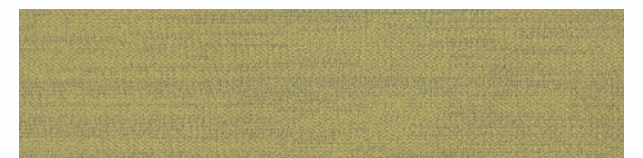


Polaris 8

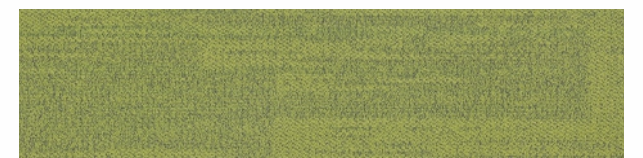
Style Name: Polaris
Construction: Multi-level loop
Yarn: Universal Nylon6 & Plencolor Nylon6
Color System: 100% Solution Dyed
Gauge: 1/12
Stitches: 10 per inch
Pile Weight: 19 oz/yd²
Pile Height: 2.5mm-4.5mm(±0.5mm)
Backing: PVC with fiberglass
Tile Size: 25cm×100cm
Area of Use: Heavy Commercial
Flammability: Passes(ASTME648-10) Class I
 Passes (GB 8624-2012) B1
Smoke Density: Passes ASTM E662 Less than 450
Static Propensity: Passes AATCC-134≤3.5kV
Static Control: Life-of-the carpet Static Protection



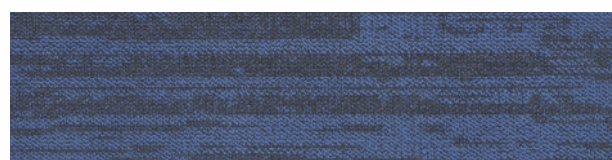
Polaris 9



Polaris 17



Polaris 18

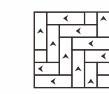


Polaris 10



Polaris 19

INSTALLATION METHODS



Herringbone



Ashlar



Monolithic



Brick